

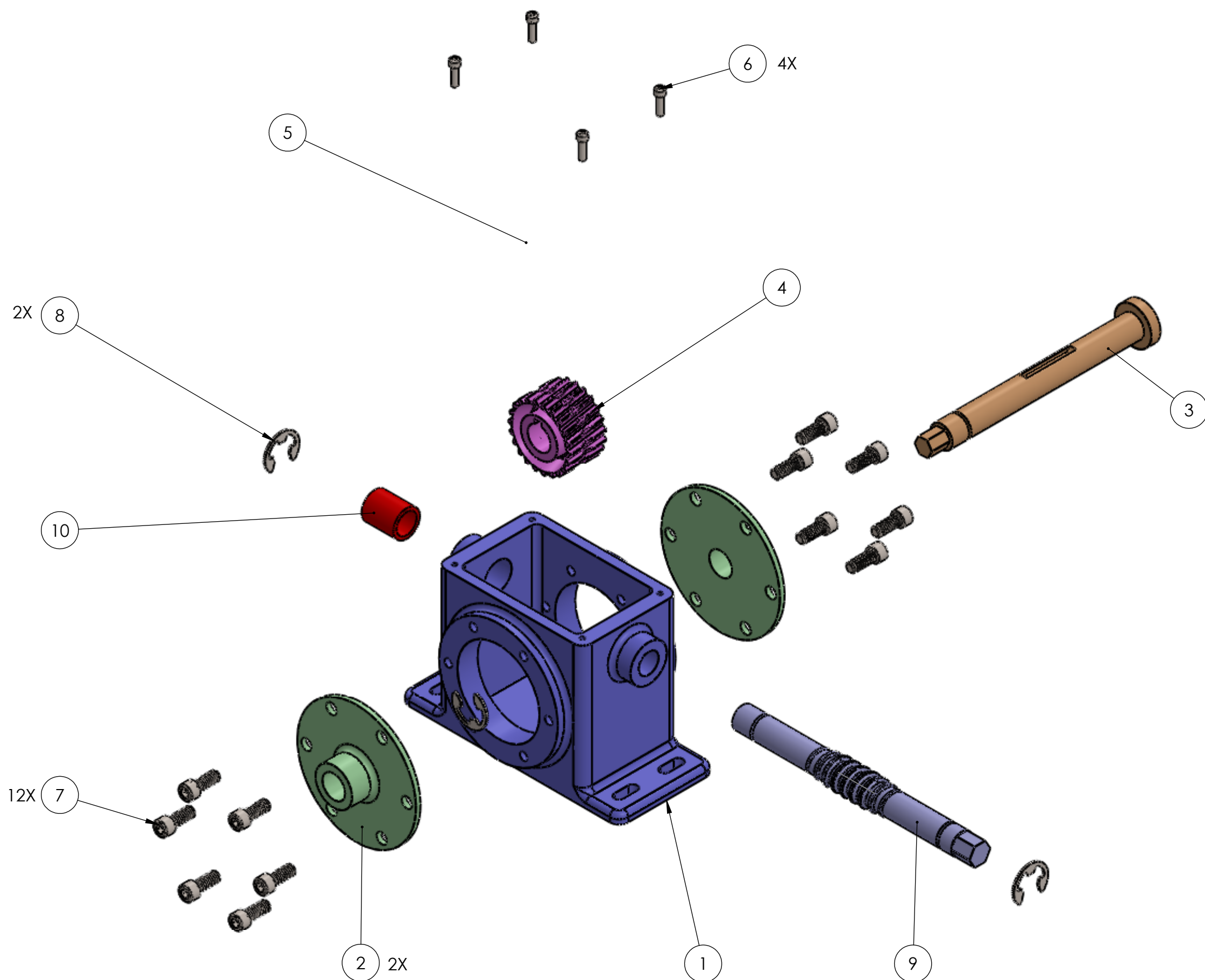
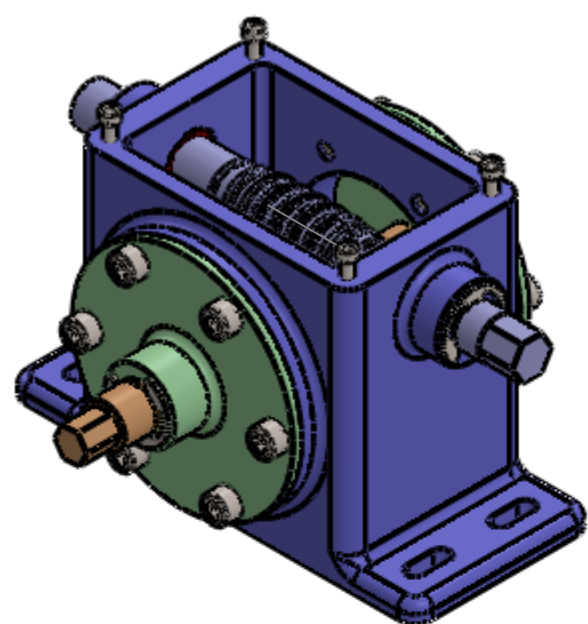
4

3

2

1

ITEM NO.	Material	PART NUMBER	DESCRIPTION	Weight	Volume	Cost	QTY.
1	Cast Alloy Steel	JB-Housing	Housing	4.454	16.890	\$102.41	1
2	AISI 1020	JB-Side Cover	Side Cover	0.36	1.26	\$7.56	2
3	Chrome Stainless Steel	JB-Worm Gear Shaft	Worm Gear Shaft	0.49	1.73	\$11.16	1
4	AISI 1020	JB-Worm Gear wGears	Worm Gear	0.33	1.15	\$6.90	1
5	Cast Alloy Steel	JB-Top Cover	Top Cover	0.48	1.82	\$10.92	1
6		socket head cap screw_ai	6-32 x .50 SHCS				4
7		socket head cap screw_ai	1/4-20 x .75 SHCS				12
8		e-external retaining ring_ai	Retainer Clip				3
9	Chrome Stainless Steel	JB-Offset Shaft wGears	Offset Shaft	0.49	1.75	\$10.50	1
10	Brass	JB-Bushing	Bushing	0.05	0.15	\$0.90	1



NOTES:

- TOTAL COST = \$150.35 USING 3D PRINTER MATERIAL
- USE LOCKTITE ON SCREW THREADS PRIOR TO INSTALLATION
- USE #6 HEX ALLEN WRENCH TO INSTALL ITEM #6
- USE 1/4 HEX ALLEN WRENCH TO INSTALL ITEM #7
- USE EPOXY TO INSTALL ITEM #10 TO ITEM #1
- USE EPOXY TO INSTALL ITEM #4 TO ITEM #3

**PROPRIETARY AND CONFIDENTIAL**  
 THE INFORMATION CONTAINED IN THIS DRAWING IS THE SOLE PROPERTY OF <INSERT COMPANY NAME HERE>. ANY REPRODUCTION IN PART OR AS A WHOLE WITHOUT THE WRITTEN PERMISSION OF <INSERT COMPANY NAME HERE> IS PROHIBITED.

UNLESS OTHERWISE SPECIFIED:		DRAWN	NAME	DATE	TITLE: <b>Gear Box Assembly</b>
DIMENSIONS ARE IN INCHES		CHECKED	JB	12/2/15	
TOLERANCES:		ENG APPR.			
FRACTIONAL ±		MFG APPR.			
ANGULAR: MACH ± BEND ±		Q.A.			SIZE DWG. NO. REV <b>C JB-Housing 0</b>
TWO PLACE DECIMAL ±		COMMENTS:			
THREE PLACE DECIMAL ±					SCALE: 1:2 WEIGHT: SHEET 1 OF 1
INTERPRET GEOMETRIC TOLERANCING PER:	MATERIAL	FINISH			
APPLICATION	DO NOT SCALE DRAWING				

4

3

2

1